



SKL 844 Wheel Loader

Power and state-of-the-art engineering

Operating weight 5.7 t
Engine output 54 kW (73.5 HP)
Bucket capacities 1.00-1.55 m³



SKL 844 – The machine illustrated may include non-standard equipment



Technical data

Engine

Manufacturer	Deutz
Type	4-cylinder diesel engine
Combustion	4-stroke cycle, direct fuel injection
Displacement	3100 cm ³
Power rating according to ISO 9249 (DIN 70020) at 2200 rpm	54 kW (73.5 HP)
Cooling system	external oil cooling

Electrical system

Nominal voltage	12 V
Battery	12 V / 74 Ah / 400 A

Power transmission

Hydrostatic drive, closed circuit, independent from loader hydraulics. Automatic adjustment of drawbar pull and speed. Hydraulic motor power shift providing two speed ranges. Infinitely variable speed control forward and reverse. 4-wheel drive from reduction gear on rear axle via cardan shaft to front axle. Brake inching pedal. 2 speed ranges:

"Low"	0-6 km/h
"High"	0-20 km/h
High-speed version:	
"Low"	0-6 km/h / 0-18 km/h
"High"	0-12 km/h / 0-36 km/h

Axles

Front: Rigid planetary final drive axle with integrated center-mounted drum brake. Slip-type differential.

Rear: Oscillating (with cushioning) planetary final drive axle with integrated reduction gear. Slip-type differential.

Oscillation ± 12 deg.

Tires

Standard 405/70 R 20 SPT 9 Dunlop

Brakes

Service brake: hydraulically actuated center-mounted drum brake, acting on all 4 wheels via 4-wheel drive.

Auxiliary brake: Hydrostatic drive provides dynamic braking.

Parking brake: Mechanically operated drum brake on front axle.

Steering

Articulated, 2 steering cylinders with final position damping on both sides, fully hydraulic through load-sensing priority valve, quick and easy steering even at engine idle-running speed.

Total steering angle 80 deg.

Fluid capacities

Fuel tank	110 l
Hydraulic system (includes tank)	88 l

Hydraulic system

Max. pump capacity	72 l/min
Working pressure	250 bar
Control unit: Proportional hydraulic valve with 3 control circuits and high-speed valve for tilting; single, four-way control lever (multi-function lever) for lift and tilt cylinders with integrated travel direction selector switch and switch for additional control circuit. Float position in control circuit "Lowering", electro-hydraulically operated. Additional control circuit incl. quick couplers and continuous operation function provided as standard.	

Loader installation

Loader installation with true parallel linkage and integrated mechanical (optionally hydraulic) quick-attach system.

General-purpose bucket to ISO 7546	1.00 m ³
Lift capacity at ground level to ISO 8313	61,000 N
Ripping force at bucket edge to ISO 8313	55,000 N

Operating data, standard equipment

Operating weight to ISO 6016	5700 kg
Tipping load, straight to ISO 8313	4400 kg
Tipping load, articulated to ISO 8313	3900 kg
Total length, bucket on ground	5310 mm
Total width	1950 mm
Turning radius outside bucket edge, transport position	4445 mm

Fork lift attachment

Payload over the total lift and steering range 2400 (2600*) kg

Payload in transport position, approx. 300 mm

above ground level, total steering range 3200* kg

Width of fork carrier 1240 mm

Length pallet forks (140 x 50 mm) 1120 mm

Stability factor on level and solid ground 1.25

Payload determined according to DIN 24 094 / ISO 8313.

Cab

Rubber-mounted full-vision steel cab, ROPS (to ISO 3471) and FOPS** (to ISO 3449) certified.

Cab featuring two doors, level entry to cab, easy-to-be-cleaned cab floor; electric windshield wipers and washer, front and rear, tinted panoramic safety glass, sliding window on left-hand side. Driver's seat with hydraulic cushioning and lap belt (to ISO 7096 / ISO 6683), weight-adjustable. Cab heating with 3-setting heater fan (choice fresh air - recirculating air) and windshield defroster, front and rear. Tilt-adjustable steering wheel. Radio and air conditioning pre-installation. 2 front working floodlights.

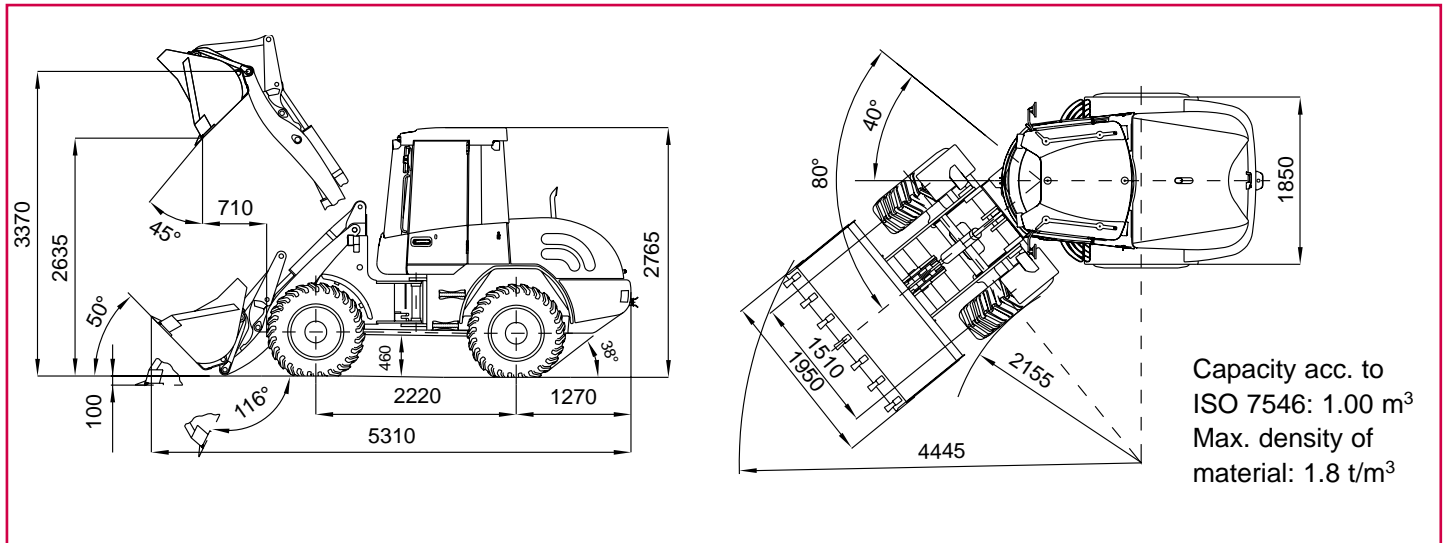
Noise emission ambient L_{WA} 100 dB (A)
Measured in dynamic measuring cycle according to 2000/14/EC.

* with rear axle weights

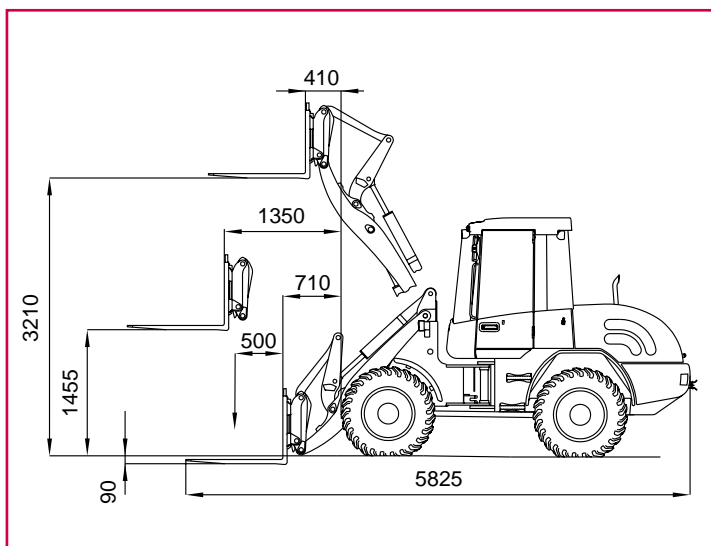
** FOPS-approved only with skylight guard (optionally)

Dimensions

SKL 844 General-purpose bucket

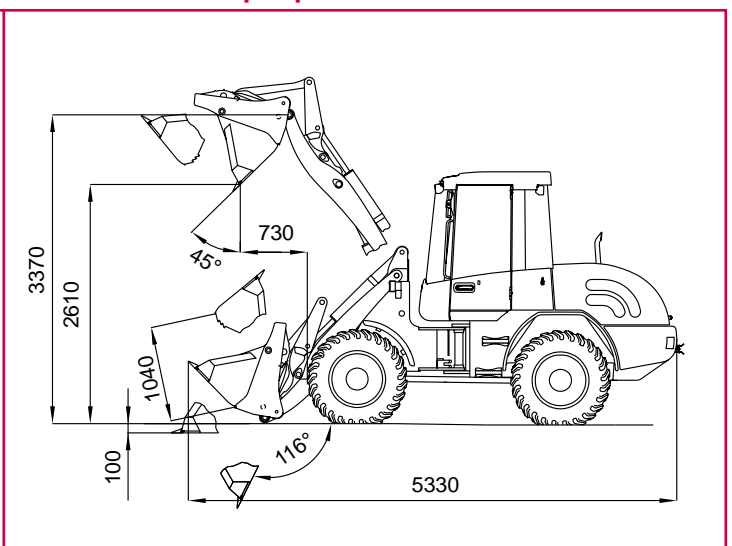


SKL 844 Fork lift attachment



Payload over total lift range: 2400 (2600*) kg
Payload in transport position: 3200* kg
* with rear axle weights

SKL 844 Multi-purpose bucket



Capacity to ISO 7546: 0.90 m³
Max. density of material: 1.6 t/m³

Bucket type

General-purpose bucket
Earth bucket
Light-material bucket
Super light-material bucket
Multi-purpose bucket
Side-dump bucket
High-tip bucket
Quarry bucket
Compost bucket

Capacity in m ³	Density of m. t/m ³	Width in mm	Dump height mm
1.00	1.8	1950	2635
1.10	1.6	1950	2585
1.35	1.2	2050	2510
1.55	0.8	2200	2485
0.90	1.6	1950	2610
0.85	1.8	2050	2515
1.00	1.2	2050	3835
0.90	2.15	2050	2610
1.05	1.2	2050	2625

Examples of material densities:

Granite, sand (damp), gravel (damp): 1.8 t/m³
Earth (damp), sand (dry), gravel (dry): 1.6 t/m³

Coal, slate: 1.2 t/m³
Coke, wood chips (dry): 0.8 t/m³

Options and extras

Tires

16/70-20 EM 10 PR E 91-2 Dunlop
375/75 R 20 XM 27 TL Michelin
405/70 R 20 MPT E-70 Conti
Non-standard tires available on request

Front attachments

Fork lift attachment with forks 1120 mm long
General-purpose bucket *, earth bucket *, light-material bucket, super light-material bucket, side-dump bucket, high-tip bucket, multi-purpose bucket *, quarry bucket, compost bucket
Load hook attachable on pallet forks
Load hook integrated in quick-attach system
Sweeper, snow blade

* optionally with bolt-on cutting edge

Quick-attach system

Hydraulically actuated

Operator's stand

Air-cushioned operator's seat
Air-cushioned comfort seat with orthopedic lumbar support, adjustable armrests and headrest
Independent diesel heating with timer
Height and tilt-adjustable steering wheel
Fire extinguisher

Diesel engine – Optional equipment

Diesel exhaust cleaner
Catalyst
RME-fuel - rape oil methyl ester (Observe instructions provided by engine manufacturer)

Cab – Optional equipment

FOPS-skylight guard
Right-hand door with sliding window
Working floodlight, rear
Yellow beacon
Pressurized cab
Air-conditioning

Further options

High-speed travel option (36 km/h)
Filling with biodegradable hydraulic oil / Ester Base VI 68
Electrical tank refilling pump
LSD - ride control system
Outlet for hydraulic hand-held hammer
Back-up alarm for reverse travel
Special crawling speed version available on request
Anti-theft device, immobilizer
Rear axle weights
Quick couplers (Flat-Face) for 3rd control circuit on lift frame
Pilot-controlled hose-rupture safety valves for lift and tilt cylinders

Further attachments available on request

Subject to change without further notice

